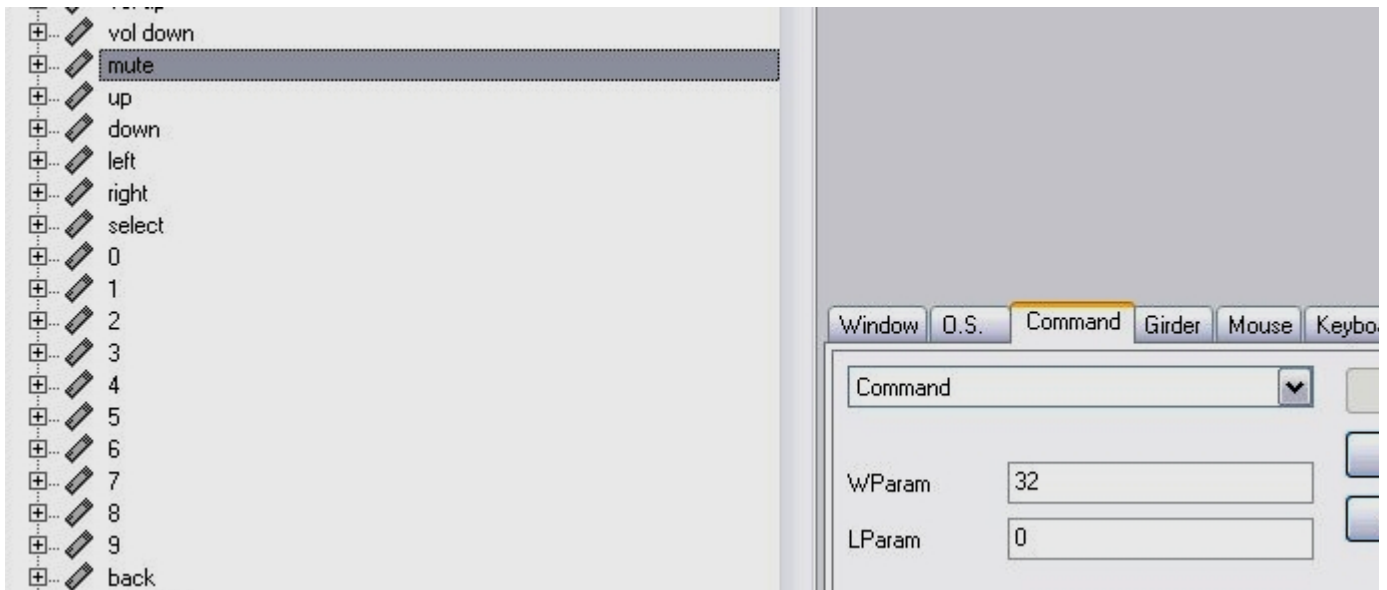
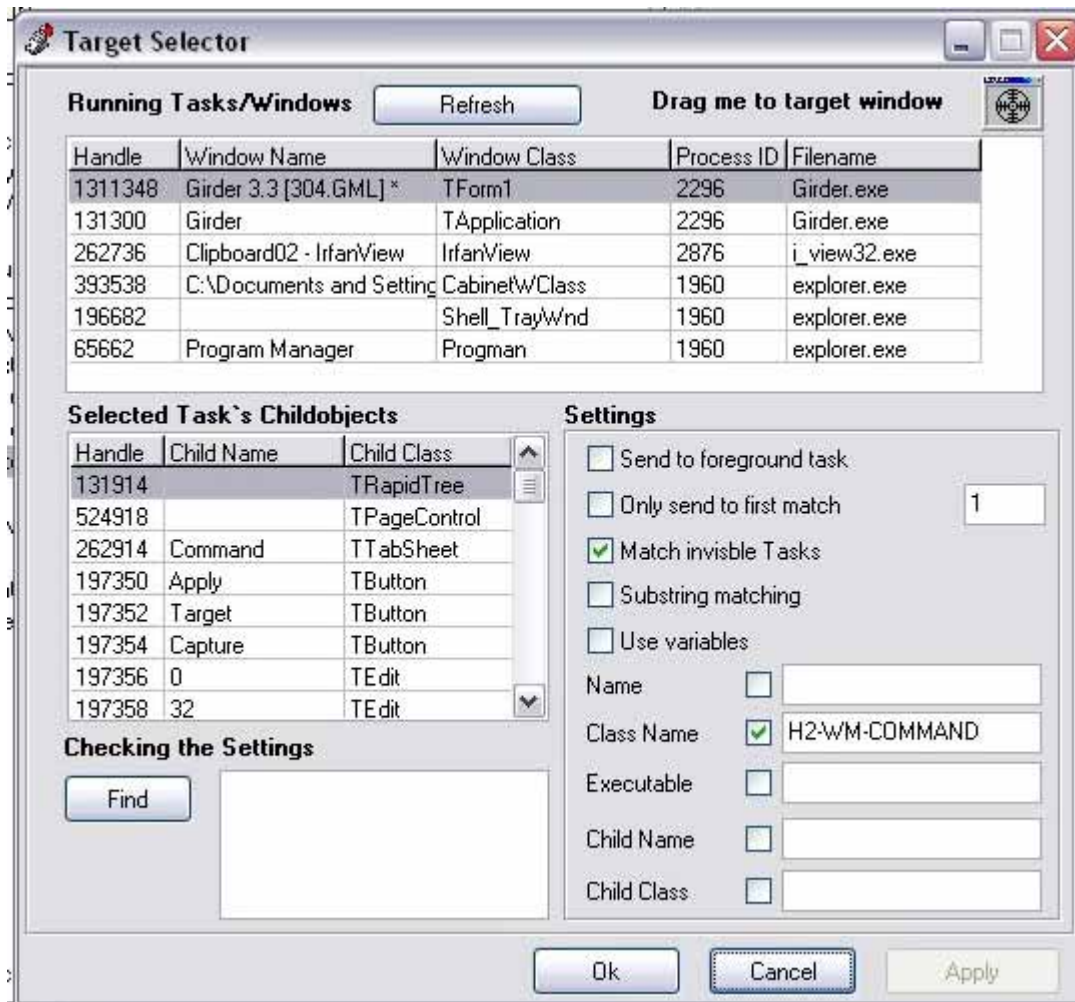


## HOW TO CONTROL MEEDIO WITH THE GIRDER "COMMAND" COMMAND

- First, go into Meedio Configuration, and on the FULL-TIME PLUGIN tab, enable the 'WM COMMAND' plugin. Go into the WM Command plugin's settings, and see what is listed under the Target Window Class Name. If it doesn't say "H2-WM-COMMAND" (without the quotes), then type that exactly (all-caps, too.) Thanks to bunker12 for explaining this clearly in a post somewhere on the meedio forums.
- Now, in Girder, make a "MUTE" command (or use my .GML file), go to the COMMAND tab, and choose COMMAND. Set the "WPARAM" # to the same GRAY number listed for the MUTE command on the INPUT tab of the Meedio Configuration application. In the image below, that # for me is "32": (of course you can make any command; MUTE is just the example I'm using here.)



- Clicking on the TARGET button (as shown in the image immediately above these words) should give:



- Now you're ready. Girder should be able to send commands to both Meedio and SageTV without using any keyboard mappings. I believe that BOTH methods use the windows send message feature, but for Girder to talk to Meedio you need the Girder "COMMAND" command, and for Girder to talk to SageTV you need to use Girder's SEND MESSAGE plugin.
- That's most of the story. More detailed explanations are explained in forum posts regarding these topics. I hope this helps someone until a more official guide is released.
- I'm uploading my .GML files here. The webserver will not allow .GML file extensions, so I've changed the ".GML" to ".TXT". So download my GML file below, and rename it to "fodder.gml" instead of "fodder.txt". Please post questions on the forums, or private message me, mostlyfodder, at either Meedio.com or Sage.TV.
- Here are two Girder .GML files:

[304.GML --- THIS IS THE GML FILE DESCRIBED ABOVE. IT USES SAGETV AS A "HOME" MENU. MEEDIO IS LAUNCHED FROM SAGE USING NIELM'S CUSTOM .STV \(WHICH IS AVAILABLE AT THE SAGETV WEB SITE\)](#)

[254.GML --- THIS IS A DIFFERENT GML FILE THAT REQUIRES SAGETV AND MEEDIO TO BE BOTH LOADED INTO MEMORY AT THE SAME TIME, BUT MINIMIZES WHICHEVER ONE IS NOT IN USE](#)